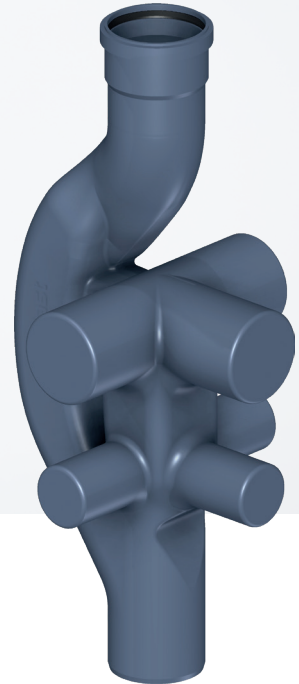


# POLO-KAL NG Qmax

## IDEAL DRAINAGE METHOD FOR HIGH-RISE BUILDINGS



### PERFECT DESIGN FREE AIR CIRCULATION

With its POLO-KAL NG Qmax fitting, POLOPLAST offers a drainage system for high-rise buildings that provides high quality in hydraulics. Its special design allows flexible connections per storey; additionally, neither positive or negative pressure can occur in the connecting pipes, which makes parallel ventilation stacks unnecessary.

**Q UP TO 12 l/s  
WITH DN 110**

### UNBEATABLE ADVANTAGES

- **Pressure balance**

The special shape of the POLO-KAL NG Qmax fitting maintains the air column required for pressure equalization in single stacks DN 110 up to a flow rate of 12 l/s.

- **Low space and material requirements**

Thanks to its very high drainage capacity, POLO-KAL NG Qmax allows a space-saving design of the single stacks without the necessity of an additional ventilation stack.

- **Reduced velocity**

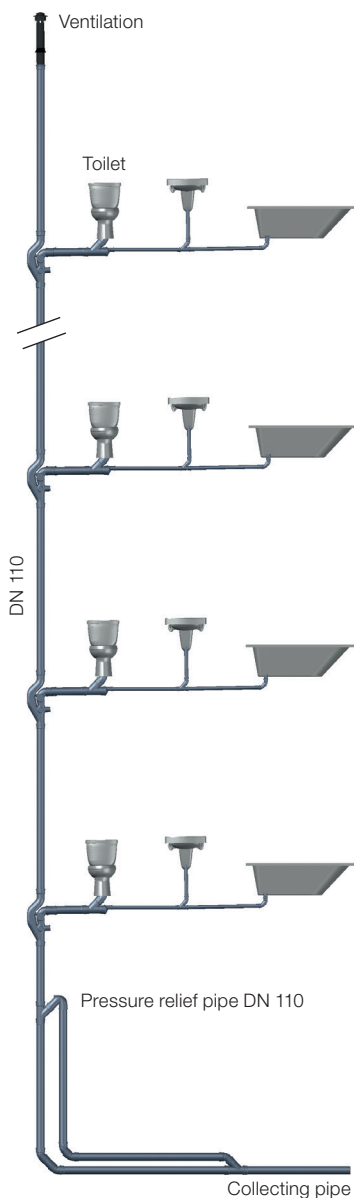
The POLO-KAL NG Qmax fitting reduces the velocity fall of waste water independently of the height of the building.

# POLO-KAL NG Qmax

## IDEAL DRAINAGE METHOD FOR HIGH-RISE BUILDINGS

### OUTSTANDING DRAINAGE PERFORMANCE

Thanks to the special shape of the POLO-KAL NG Qmax fitting, the waste water flows from the stacks and from the branchpipes are brought together in a controlled manner. This ensures free air circulation that does not affect the pressure conditions in the branchpipes.



**POLO-KAL NG Qmax**



| DN/OD | A.-Nr. |
|-------|--------|
| 110   | 03640  |

### COMPATIBLE

This fitting is made from the tried and tested PP-material and can be combined with the POLO-KAL® pipe systems.

**POLOPLAST** GmbH & Co KG  
 Poloplaststraße 1  
 4060 Leonding . Austria  
 T +43 (0) 732 . 38 86 . F +43 (0) 732 . 38 86 . 9

office@poloplast.com  
 www.poloplast.com