



poloplast

Pipe and cable penetration

POLO-RDS Evolution



POLO-RDS Evolution

Finned pipe

Defined **tear-off elements** for wall thicknesses from 20 to 60 cm for simple shortening of the finned pipe

Environmentally friendly finned pipe
for sizes DN 100, 150, 200 and 300



Simplified installation thanks to **patented installation indicators**

Sealing elements with onion-layer design - rapid, perfect fit for various diameters

Suitable for **single and multiple feed-through** and retrofitting

POLO-RDS Evolution Floor penetration



Protective cover
Remove foundation slab evenly

Push-fit socket DN 110

Positioning openings
can be fixed to the
reinforcement steel mesh

Capillary barrier
against ground moisture

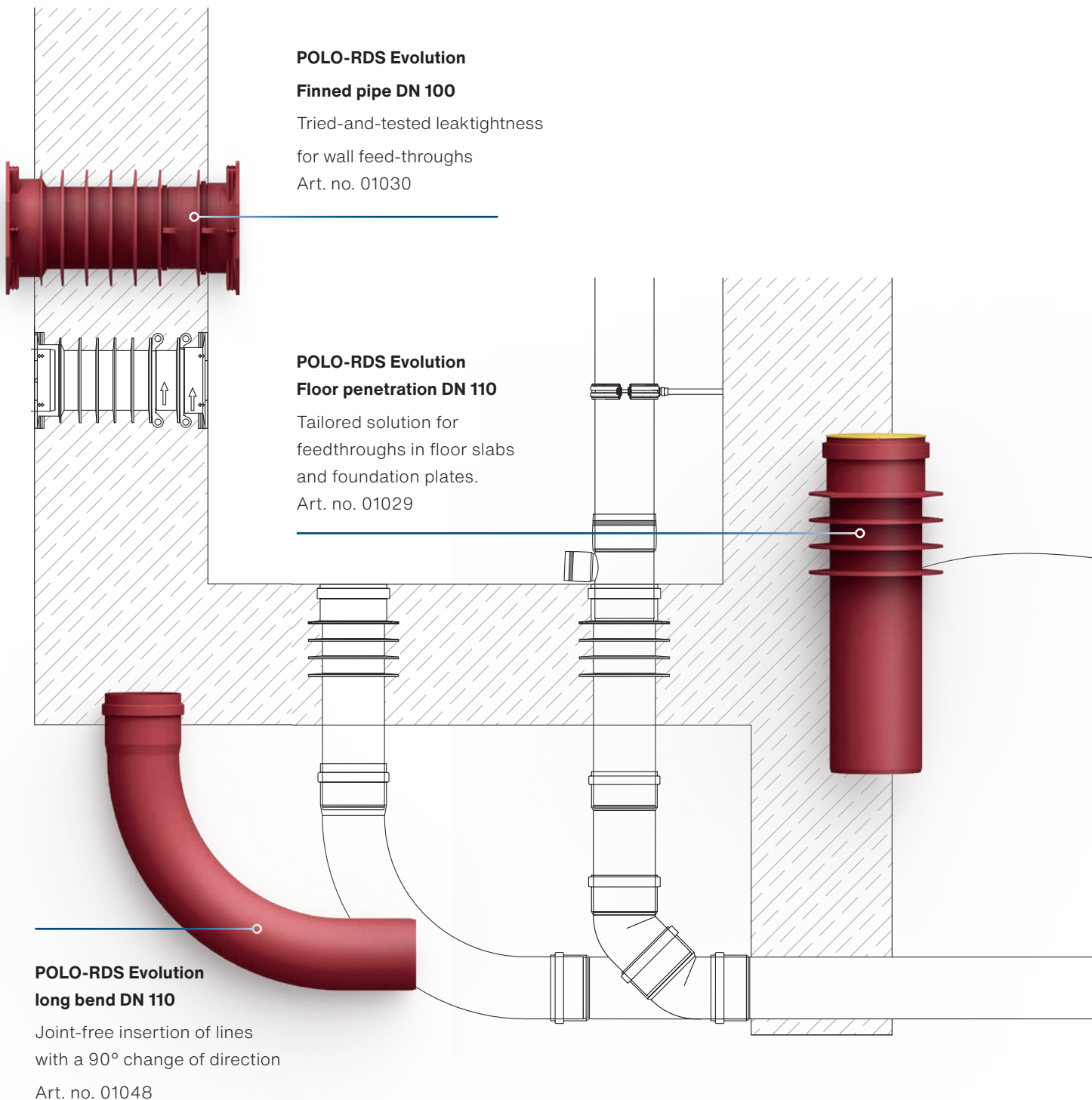
Perfect mount
for POLO-RDS Evolution
sealing elements
No slipping!

Tested radon tightness

POLO-RDS Evolution Installation situations

As a fully integrated system, POLO-RDS Evolution provides the ideal all-in-one solution for safely routing service lines through floor slabs, walls, and ceilings. Its versatile design and easy change of direction allow for both vertical and horizontal entries into the building structure.

**tested for
watertightness
up to 1 bar**





POLO-RDS Evolution

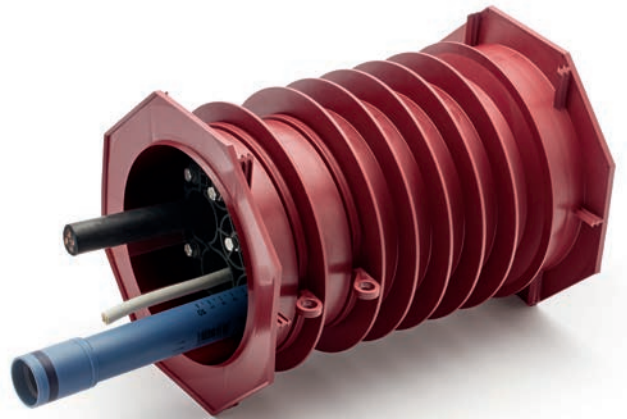
Always leak-tight, always reliable

This pipe and cable penetration system combines innovative solutions with intelligent design: simplified planning, flexible applications, and rapid installation make POLO-RDS Evolution one of the leading systems for safe, leak-tight cable and pipe feed-throughs.

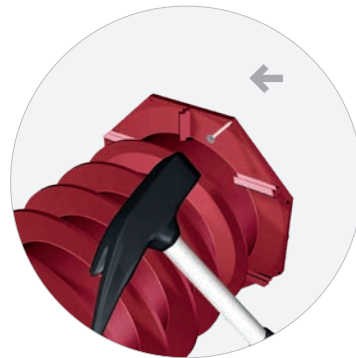
POLO-RDS Evolution is a true all-round solution, providing maximum safety and long-term, permanent tightness. The finned pipe, made from a special halogen-free and lead-free polypropylene compound, ensures **pressure-tight feed-throughs up to 1 bar** for cables and pipes ranging from 8 to 250 mm in diameter.

POLO-RDS Evolution finned pipe

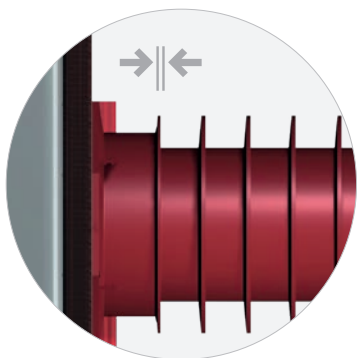
The POLO-RDS Evolution finned pipe is engineered with a systematic approach and exceptional versatility. Its smart design details streamline both planning and installation, ensuring safe, reliable, and permanently leak-tight wall penetrations for cables and pipes.



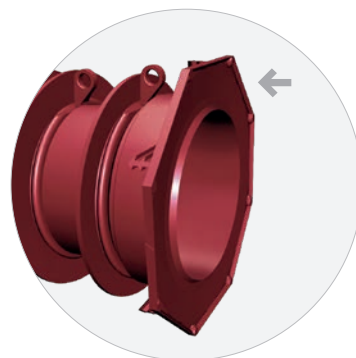
Integrated tear-off elements allow the pipe to be shortened to standard dimensions without a cutting tool, making it easy to adapt to different wall thicknesses.



Nail holes in the flange allow the finned pipe to be fixed to the formwork quickly and accurately without additional formwork aids.



The **patented spring element** of the finned pipe compensates for inaccuracies and equalises formwork tolerances.



The **wall flange** is designed as a sealing surface. This prevents cement slurry from penetrating during concreting and keeps the pipe clean inside.

POLO-RDS Evolution floor penetration

The POLO-RDS Evolution floor penetration combines absolute safety with outstanding simplicity. For DN 110 applications, the building drainage system can be connected directly and sealed in the floor slab in combination with the POLO-RDS Evolution pipe and cable penetration sealing elements.



POLO-RDS Evolution with protective cover



Advantages for the construction company

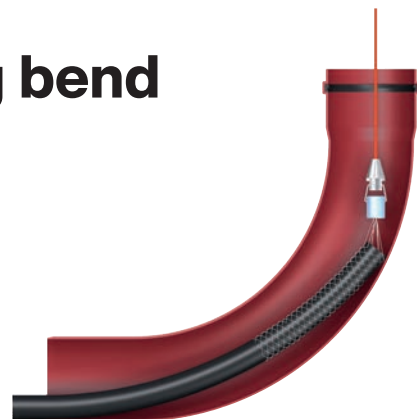
- A simple and professional solution for creating a ground feed-through system
- Ready-to-install unit – no need to fit additional components
- Fully sealed against concrete infiltration
- Capillary barrier to protect against ground moisture
- Sleeve can be trimmed flush with the top edge of the foundation slab
- Easy insertion of service lines thanks to the POLO-RDS Evolution long bend DN 110
- Direct connection to the building's drainage system
- One installation component for all trades – from plumbing to electrical work
- Pre-assembled construction cover to protect against dirt and debris



POLO-RDS Evolution long bend

Effortless media pipeline insertion

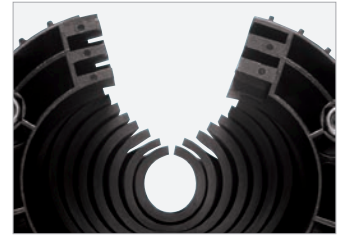
- No need to join 6 x 15° bends
- Easy insertion of cables and lines thanks to smooth inner wall without joints
- Compatible with POLO-RDS Evolution ground feed-through and PVC sewage pipes DN 110



Sealing elements

POLO-RDS Evolution sealing elements with extra-wide rubber seals are designed for safe and leak-tight feed-throughs of media lines in floor slabs, walls and ceilings. They are installed in the finned pipe or in a core borehole. The patented **yellow installation indicators** enable safe and straightforward installation of the sealing elements.

Hinged sealing elements enable the retrofitting of cables and pipes.



Tested for water and gas leak-tightness

Selection from the product range



**Sealing element
Multiple feed-through
DN 100**
Art. no. 01010



**Sealing element
DN 150**
Art. no. 01025



**Sealing element
Multiple feed-through
DN 150**
Art. no. 01023



**Sealing element
DN 200**
Art. no. 01012



**Sealing element
DN 300**
Art. no. 01017

Perfect for media lines

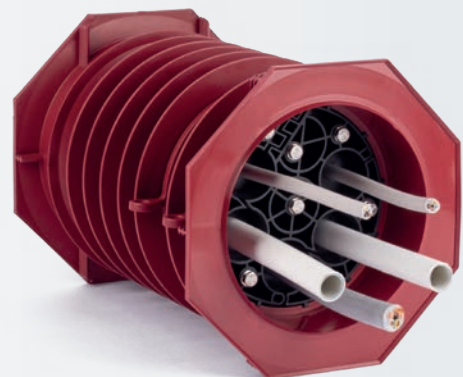
- Connection lines for **water supply**, **power supply** and **heat pumps**
- **Garden connections** (power supply for swimming pool, rainwater tank, etc.)
- **Data lines** (fibre optic, cable TV, etc.)
- **Charging stations** for e-mobility
- RESERVE for **retrofitted installations!**

Ideal system for heat pumps

All connections such as control cables and the flow and return can be fed into the building in just one sealing element with multiple feed-throughs (Ø 8–35 mm).

Tested tightness: The system-compliant sealing elements guarantee absolute safety in the event of a pipe leak: POLO-RDS Evolution reliably prevents gas or refrigerant from entering the basement*.

* Successfully tested with the environmentally friendly refrigerant R290





POLOPLAST: versatile, innovative, sustainable

Passion, audacity and over 70 years of experience in perfecting plastic pipe systems and compounds have made POLOPLAST a technology leader in Europe.

The highly efficient, long-lasting pipe systems are used in a wide range of applications — from building drainage, ventilation, and wastewater management to specialised areas such as bridge drainage. These custom-engineered products are also trusted by the naval sector and various industrial industries.

At POLOPLAST, environmental and economic sustainability are central throughout the entire product life cycle. Resource-efficient manufacturing and the continuous shift toward increasingly recyclable products are driving sustained success.



For more information and product details,
visit www.poloplast.com

poloplast

© Copyright. All content and images are protected by copyright and may not be reproduced, published or distributed – even in modified form – without the express written consent of POLOPLAST.

POLOPLAST GmbH & Co KG
Poloplaststraße 1 . 4060 Leonding . Österreich
+43(0)732.3886.0 . office@poloplast.com . www.poloplast.com

POLOPLAST . A Wietersdorfer company