

POLO-INFO

Arched bridge element for POLO-POLYMUTAN

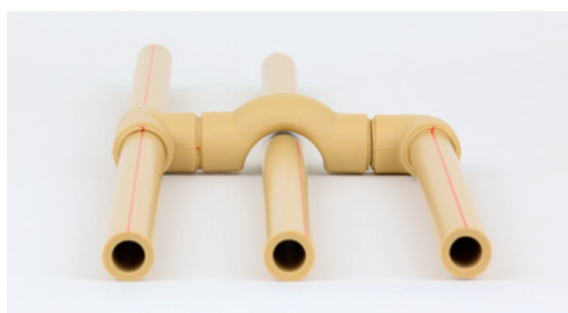


The new and compactly designed arched bridge element for the POLO-POLYMUTAN installation system!

With the introduction of the new arched bridge element available in the dimensions of 20 and 25 mm, POLOPLAST offers yet another demonstration of its competence in innovative further development. The arched bridge element provides an intelligent and practical solution for the crossing of a pipe and can be implemented in a variety of assembly options within an installation system.

Advantages of the arched bridge element

- guaranteed PN 20 strength grade
- increased application possibilities
- fewer components required
- faster assembly
- space-saving compact design
- uniform distribution of wall thickness
- allows crossing of a pipe of the next-highest dimension



Dimension	Item No.
20 mm	11502
25 mm	11503

The perfect choice for every assembly type

Thanks to the compact design, the installation is simpler, cleaner and offers a greater range of application possibilities. Whether they are flush-mounted or surface-mounted, where pipes need to be crossed in tight spaces, the new arched bridge element offers the ideal solution.



A comparison with the old bridge element shows that the compact new arched bridge element requires less space, which means that a greater number of parallel pipes can be installed.

OLD

The previous spring bow element allowed a possible pipe distance of 120 mm.



NEW

The new arched bridge element allows a pipe distance of 80 mm.



Simply better thanks to quality with a system

Our fittings and pipes are manufactured from top quality PP granulate. This material features durability, excellent temperature resilience and impressive resistance to corrosion, pitting, leaching and mechanical abrasion.

POLOPLAST GmbH
D-87640 Ebenhofen . Germany
Kirnachstraße 17
T +49 (0) 8342 . 70 06 . 0 . F +49 (0) 8342. 70 06 . 66

info@poloplast.com
www.poloplast.com